

# Motor Vehicle Registrations Western Australia October 1994

## MAIN FEATURES

New motor vehicle registrations (excluding motor cycles) for October 1994 totalled 5,358, an increase of 2.2 per cent compared with September 1994. Seasonally adjusted registrations rose by 4.0 per cent during this period. The trend estimate continued its slight upwards movement and is now 6.3 per cent above the level in October 1993.

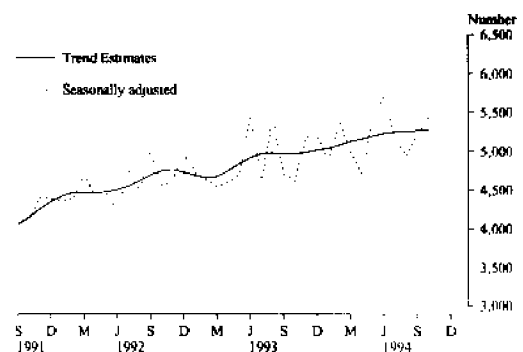
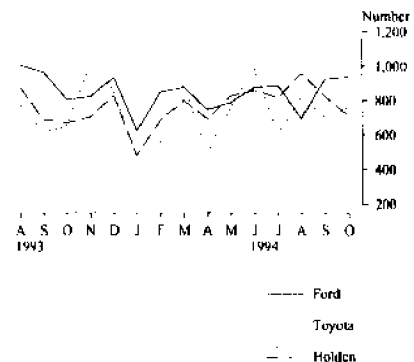
Passenger vehicle registrations for October 1994 increased by 1.4 per cent compared with September 1994 and registrations of other vehicles increased by 5.5 per cent during this period, in original terms.

Ford was once again the leading passenger vehicle make in October 1994 with 936 registrations (21.4 per cent) followed by Toyota with 762 registrations (17.4 per cent) and Holden with 712 registrations (16.3 per cent).

Toyota led the light commercial market with 239 registrations (30.1 per cent). Holden, with 144 registrations (18.1 per cent), and Ford, with 143 registrations (18.0 per cent) were next.

The Ford Falcon/Fairmont was the leading passenger vehicle model with 16.0 per cent of the market. The Holden Commodore/Calais was next with 11.5 per cent followed by the Mitsubishi Magna (7.0 per cent) and the Hyundai Excel (6.8 per cent).

NEW MOTOR VEHICLE REGISTRATIONS

NEW PASSENGER VEHICLES  
TOP THREE MAKES

## INQUIRIES

- For further information about these statistics and the availability of related unpublished statistics, contact Ian Mackley on (09) 360 5242.
- For other inquiries, including copies of publications, please contact Information Services on (09) 360 5140.

TABLE 1 – NEW MOTOR VEHICLES (a) REGISTERED, WESTERN AUSTRALIA

Period (b)	Passenger vehicles	Light commercial vehicles	Rigid trucks	Articulated trucks	Non - freight carrying trucks (c)	Buses	Motor cycles	Total	Perth Statistical Division
1991-92	41,979	7,664	1,024	109	101	675	1,814	53,366	41,926
1992-93	45,567	9,581	1,009	125	84	757	2,117	59,240	46,593
1993-94	48,589	10,350	1,102	232	67	735	2,103	63,178	49,074
1993--									
August	4,799	657	79	16	5	42	134	5,732	4,583
September	3,861	726	88	8	6	55	142	4,886	3,918
October	3,674	753	88	17	6	49	156	4,743	3,675
November	4,203	984	91	26	5	52	327	5,688	4,479
December	4,429	829	97	26	9	81	169	5,640	4,386
1994--									
January	3,326	631	60	25	6	46	172	4,266	3,243
February	4,054	752	102	17	4	87	237	5,253	4,117
March	4,475	1,043	94	10	9	72	184	5,887	4,492
April	3,322	774	80	24	4	46	177	4,427	3,345
May	4,199	967	85	19	6	52	149	5,477	4,216
June	4,520	1,542	135	28	6	101	122	6,454	4,863
July	4,004	715	104	11	4	45	102	4,985	3,919
August	4,350	759	93	21	3	44	229	5,499	4,346
September	4,317	773	75	26	10	44	191	5,436	4,364
October	4,379	795	99	26	2	57	223	5,581	4,415

(a) Excludes plant and equipment, caravans and trailers. (b) Financial year totals may not equal the sum of individual monthly totals due to ongoing data revisions. (c) Includes ambulances, hearses, fire engines and fire tenders, tow trucks, mobile cranes, machine mounted non-freight carrying trucks and motorised caravans.

TABLE 2 – NEW MOTOR VEHICLES (a) REGISTERED, WESTERN AUSTRALIA SEASONALLY ADJUSTED AND TREND ESTIMATE

Period	Passenger vehicles			Other vehicles			Total		
	Original	Seasonally adjusted	Trend estimate	Original	Seasonally adjusted	Trend estimate	Original	Seasonally adjusted	Trend estimate
1993--									
August	4,799	4,556	4,005	799	885	973	5,598	5,441	4,978
September	3,861	3,773	4,003	883	927	959	4,744	4,700	4,962
October	3,674	3,735	4,004	913	879	961	4,587	4,614	4,965
November	4,203	4,085	4,009	1,158	1,110	977	5,361	5,195	4,986
December	4,429	4,150	4,019	1,042	1,047	993	5,471	5,197	5,012
1994									
January	3,326	3,909	4,034	768	971	1,009	4,094	4,880	5,043
February	4,054	4,380	4,054	962	990	1,026	5,016	5,370	5,080
March	4,475	3,929	4,073	1,228	1,074	1,055	5,703	5,003	5,128
April	3,322	3,708	4,073	928	974	1,090	4,250	4,682	5,163
May	4,199	4,392	4,085	1,129	1,049	1,115	5,328	5,441	5,200
June	4,520	4,166	4,116	1,812	1,534	1,119	6,332	5,700	5,235
July	4,004	4,181	4,155	879	958	1,095	4,883	5,139	5,250
August	4,350	3,966	4,201	920	969	1,055	5,270	4,935	5,256
September	4,317	4,230	4,253	928	994	1,012	5,245	5,224	5,265
October	4,379	4,476	4,302	979	959	975	5,358	5,435	5,277

(a) Excludes motor cycles, plant and equipment, caravans and trailers.

TABLE 3 – REGISTRATIONS OF NEW PLANT AND EQUIPMENT, CARAVANS AND TRAILERS

Period	Plant and equipment (a)	Caravans	Trailers			Total
			Box	Boat	Other	
PERTH STATISTICAL DIVISION						
1994--						
May	38	61	403	71	74	548
June	41	67	462	76	98	636
July	48	44	345	73	76	494
August	60	30	449	79	100	628
September	51	40	367	115	105	587
October	47	46	419	90	92	601
WESTERN AUSTRALIA						
1994--						
May	97	97	469	131	120	720
June	97	102	525	123	146	794
July	91	73	395	108	125	628
August	100	52	504	139	166	809
September	98	74	428	195	155	778
October	103	71	463	174	142	779

(a) Includes tractors.

**TABLE 4 — REGISTRATIONS OF NEW PASSENGER VEHICLES BY MAKE AND TARE (a) —  
OCTOBER 1994**

Make	Western Australia						Total	Per cent	Division
	Tare (kg) -								
	Up to 900	901 - 1100	1101 - 1300	1301 - 1500	Over 1500	Not stated			
Audi	—	—	5	3	—	—	8	0.2	7
B.M.W.	—	—	14	14	3	—	31	0.7	29
Daewoo	—	109	—	—	—	—	109	2.5	85
Daihatsu	102	16	18	—	3	—	139	3.2	125
Eunos	—	—	8	2	—	—	10	0.2	8
Ford	65	90	60	282	439	—	936	21.4	754
Holden	50	52	38	525	47	—	712	16.3	594
Honda	—	50	16	35	2	—	103	2.4	98
Hyundai	—	307	66	3	—	—	376	8.6	314
Jeep	—	—	—	—	48	—	48	1.1	24
Lada	—	1	1	—	—	—	2	—	2
Land Rover	—	—	—	—	21	—	21	0.5	14
Lexus	—	—	—	—	3	—	3	0.1	3
Mazda	67	34	81	—	3	—	185	4.2	151
Mercedes Benz	—	—	1	18	3	—	22	0.5	22
Mitsubishi	73	29	24	312	69	—	507	11.6	419
Nissan	—	42	20	10	63	—	135	3.1	99
Peugeot	—	—	15	—	1	—	16	0.4	12
Range Rover	—	—	—	—	2	—	2	—	2
Renault	—	5	—	—	—	—	5	0.1	5
Saab	—	—	—	8	—	—	8	0.2	8
Subaru	—	19	62	1	—	—	82	1.9	68
Suzuki	80	45	6	—	—	—	131	3.0	111
Toyota	3	236	211	155	157	—	762	17.4	630
Volkswagen	—	6	1	—	—	—	7	0.2	7
Volvo	—	3	—	15	—	—	18	0.4	17
Other and unknown	—	—	1	—	—	—	1	—	1
<b>Total</b>	<b>440</b>	<b>1,044</b>	<b>648</b>	<b>1,383</b>	<b>864</b>	<b>—</b>	<b>4,379</b>	<b>100.0</b>	<b>3,609</b>

(a) See paragraph 12 of the Explanatory Notes.

**TABLE 5 — REGISTRATIONS OF NEW PASSENGER VEHICLES (a) BY SELECTED MAKE AND MODEL**

Make and model	October 1994		10 months to October 1994		Make and model	October 1994		10 months to October 1994	
	No.	Per cent (b)	No.	Per cent (b)		No.	Per cent (b)	No.	Per cent (b)
<b>Ford—</b>					<b>Mitsubishi—</b>				
Falcon/Fairmont	700	16.0	5,466	13.3	Magna	308	7.0	2,628	6.4
Laser	98	2.2	1,253	3.1	Lancer	105	2.4	980	2.4
Festiva	78	1.8	869	2.1	Pajero	63	1.4	620	1.5
Other	60	1.4	620	1.5	Other	31	0.7	425	1.0
<b>Total</b>	<b>936</b>	<b>21.4</b>	<b>8,208</b>	<b>20.0</b>	<b>Total</b>	<b>507</b>	<b>11.6</b>	<b>4,653</b>	<b>11.4</b>
<b>Holden—</b>					<b>Nissan</b>				
Commodore/Calais	504	11.5	5,031	12.3	Patrol	61	1.4	577	1.4
Barina	85	1.9	1,297	3.2	Pulsar	36	0.8	573	1.4
Apollo	51	1.2	676	1.7	Bluebird	9	0.2	271	0.7
Other	72	1.6	790	1.9	Other	29	0.7	256	0.6
<b>Total</b>	<b>712</b>	<b>16.3</b>	<b>7,661</b>	<b>18.7</b>	<b>Total</b>	<b>135</b>	<b>3.1</b>	<b>1,677</b>	<b>4.1</b>
<b>Hyundai—</b>					<b>Toyota—</b>				
Excel	297	6.8	2,667	6.5	Camry	210	4.8	1,968	4.8
Sonata	36	0.8	355	0.9	Corolla	240	5.5	1,707	4.2
Lantra	33	0.8	353	0.9	Landeruiser	118	2.7	1,634	4.0
S	10	0.2	87	0.2	Other	194	4.4	1,755	4.3
<b>Total</b>	<b>376</b>	<b>8.6</b>	<b>3,462</b>	<b>8.5</b>	<b>Total</b>	<b>762</b>	<b>17.4</b>	<b>7,064</b>	<b>17.3</b>

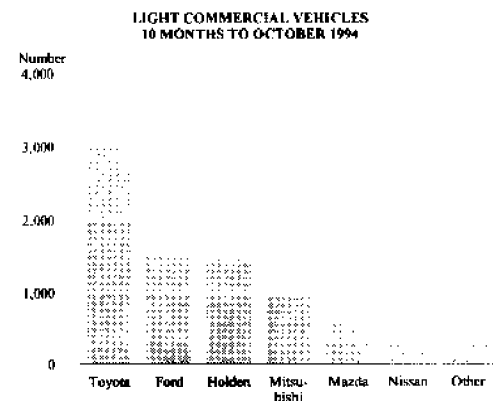
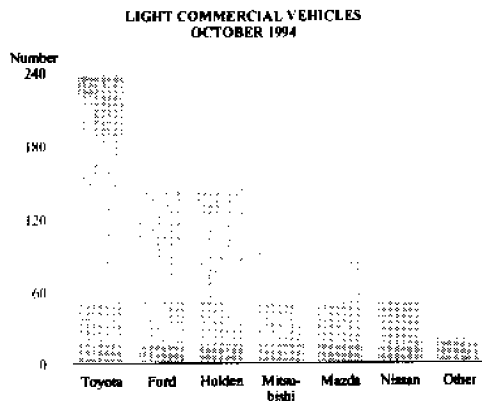
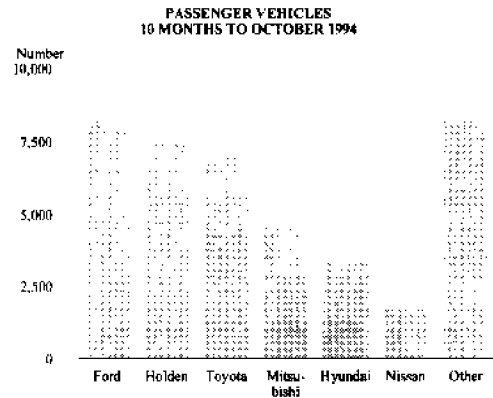
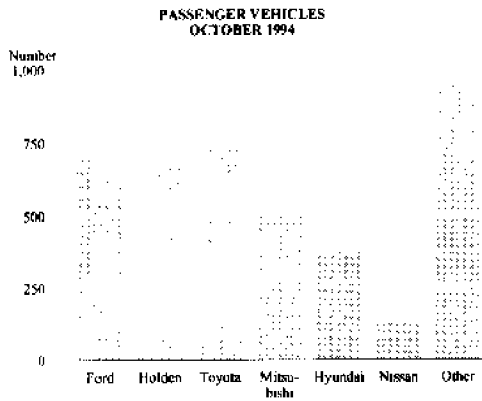
(a) See paragraph 12 of the explanatory notes. (b) Of total registrations of passenger vehicles.

**TABLE 6 — REGISTRATIONS OF NEW LIGHT COMMERCIAL VEHICLES BY MAKE AND TARE (a) — OCTOBER 1994**

Make	Western Australia							Perth	Statistical Division
	Tare (kg) -								
	Up to 900	901 - 1100	1101 - 1300	1301 - 1500	Over 1500	Not stated	Total	Per cent	
Asia	—	—	3	—	—	—	3	0.4	3
Daihatsu	1	—	—	—	—	—	1	0.1	1
Ford	—	—	11	106	26	—	143	18.0	94
Holden	—	—	6	93	45	—	144	18.1	86
Hyundai	—	1	—	—	—	—	1	0.1	1
Kia	—	—	—	—	1	—	1	0.1	—
Land Rover	—	—	—	—	6	—	6	0.8	2
Mazda	—	—	10	31	55	—	96	12.1	71
Mitsubishi	—	—	59	22	16	—	97	12.2	61
Nissan	—	1	4	11	39	—	55	6.9	25
Suzuki	2	—	—	—	—	—	2	0.3	1
Toyota	—	3	52	47	137	—	239	30.1	162
Volkswagen	—	—	—	5	2	—	7	0.9	7
<b>Total</b>	<b>3</b>	<b>5</b>	<b>145</b>	<b>315</b>	<b>327</b>	<b>—</b>	<b>795</b>	<b>100.0</b>	<b>514</b>

(a) See paragraph 13 of the Explanatory Notes.

**REGISTRATIONS OF NEW MOTOR VEHICLES (a)**



(a) Data are compiled via the new processing system. See paragraph 2 of explanatory notes.

**TABLE 7 — REGISTRATIONS OF NEW RIGID AND ARTICULATED TRUCKS BY MAKE —  
OCTOBER 1994**

Western Australia												
Make	Rigid trucks						Articulated trucks				Perth Statistical Division	
	G.V.M. (tonnes) (a) -											
	Up to 4	Over 4 up to 8	Over 8 up to 12	Over 12 up to 16	Over 16 up to 30	Over 30	Not stated	Total	Per cent	Total		Per cent
Daihatsu	—	1	—	—	—	—	—	1	1.0	—	—	—
Ford	—	3	—	—	5	—	—	8	8.1	1	3.8	8
Freightliner	—	—	—	—	—	—	—	—	—	2	7.7	2
Hino	—	—	8	3	—	—	—	11	11.1	—	—	10
International	—	—	—	4	6	—	—	10	10.1	1	3.8	9
Isuzu	—	4	4	8	1	—	—	17	17.2	—	—	14
Kenworth	—	—	—	—	—	—	1	1	1.0	3	11.5	3
Mack	—	—	—	—	—	—	—	—	—	5	19.2	3
Mazda	—	6	—	—	—	—	—	6	6.1	—	—	6
Mercedes Benz	—	—	—	—	1	—	—	1	1.0	5	19.2	3
Mitsubishi	—	13	8	2	2	—	—	25	25.3	—	—	17
Scania	—	—	—	—	1	—	—	1	1.0	—	—	—
Toyota	—	12	—	—	—	—	—	12	12.1	—	—	11
UD Nissan	—	—	—	—	1	—	—	1	1.0	—	—	—
Volvo	—	—	—	3	1	—	1	5	5.1	5	19.2	9
Western Star	—	—	—	—	—	—	—	—	—	4	15.4	2
<b>Total</b>	<b>—</b>	<b>39</b>	<b>20</b>	<b>20</b>	<b>18</b>	<b>—</b>	<b>2</b>	<b>99</b>	<b>100.0</b>	<b>26</b>	<b>100.0</b>	<b>97</b>

(a) Gross vehicle mass refers to the permitted aggregate of the tare of and the load borne by the vehicle.

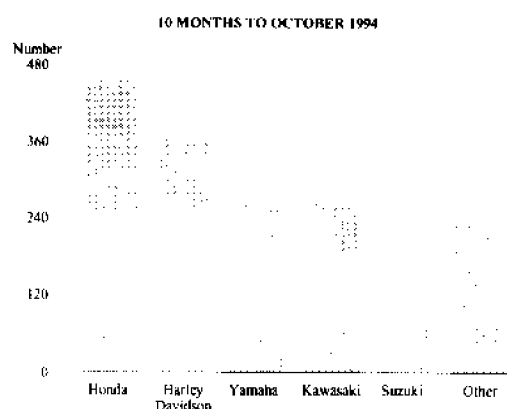
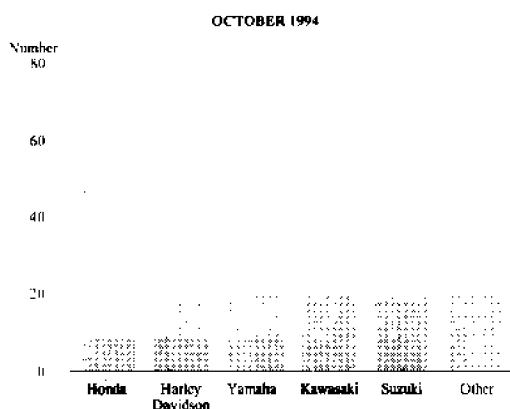
**TABLE 8 — REGISTRATIONS OF NEW VEHICLES BY FUEL TYPE, NUMBER OF CYLINDERS AND  
BODY TYPE (a) — OCTOBER 1994**

Number of cylinders	Passenger vehicles		Light commercial vehicles		Trucks and buses		Total	
	Number	Per cent	Number	Per cent	Number	Per cent	Number	Per cent
PETROL								
3	81	1.9	1	0.2	—	—	82	1.7
4	2,382	55.8	390	71.3	4	80.0	2,776	57.6
5	14	0.3	2	0.4	—	—	16	0.3
6	1,654	38.8	142	26.0	1	20.0	1,797	37.3
8	129	3.0	12	2.2	—	—	141	2.9
Other and unknown	7	0.2	—	—	—	—	7	0.1
<b>Total</b>	<b>4,267</b>	<b>100.0</b>	<b>547</b>	<b>100.0</b>	<b>5</b>	<b>100.0</b>	<b>4,819</b>	<b>100.0</b>
DIESEL								
4	20	18.5	144	58.3	48	26.8	212	39.7
6	88	81.5	102	41.3	128	71.5	318	59.6
8	—	—	—	—	3	1.7	3	0.6
Other and unknown	—	—	1	0.4	—	—	1	0.2
<b>Total</b>	<b>108</b>	<b>100.0</b>	<b>247</b>	<b>100.0</b>	<b>179</b>	<b>100.0</b>	<b>534</b>	<b>100.0</b>
GAS								
4	—	—	1	100.0	—	—	1	20.0
6	4	100.0	—	—	—	—	4	80.0
<b>Total</b>	<b>4</b>	<b>100.0</b>	<b>1</b>	<b>100.0</b>	<b>—</b>	<b>—</b>	<b>5</b>	<b>100.0</b>
ALL FUEL TYPES								
3	81	1.8	1	0.1	—	—	82	1.5
4	2,402	54.9	535	67.3	52	28.3	2,989	55.8
5	14	0.3	2	0.3	—	—	16	0.3
6	1,746	39.9	244	30.7	129	70.1	2,119	39.5
8	129	2.9	12	1.5	3	1.6	144	2.7
Other and unknown	7	0.2	1	0.1	—	—	8	0.1
<b>Total</b>	<b>4,379</b>	<b>100.0</b>	<b>795</b>	<b>100.0</b>	<b>184</b>	<b>100.0</b>	<b>5,358</b>	<b>100.0</b>

(a) Excludes motor cycles, plant and equipment, caravans and trailers.

**TABLE 9 — REGISTRATIONS OF NEW MOTOR CYCLES BY MAKE AND CUBIC CAPACITY OF ENGINE —  
OCTOBER 1994**

Make	Western Australia							Total	Per cent	Perth Statistical Division
	Cubic centimetres -									
	Up to 50	51 - 150	151 - 250	251 - 500	501 - 750	Over 750	Not stated			
B.M.W.	—	—	—	—	1	6	—	7	3.1	6
Ducati	—	—	—	—	1	7	—	8	3.6	3
Harley Davidson	—	—	—	—	—	46	—	46	20.6	27
Honda	3	40	11	—	15	7	—	76	34.1	57
Kawasaki	—	—	12	—	1	10	—	23	10.3	18
KTM	—	—	—	1	—	—	—	1	0.4	1
Motoguzzi	—	—	—	—	—	2	—	2	0.9	1
Suzuki	4	1	9	1	1	3	—	19	8.5	13
Triumph	—	—	—	—	—	3	—	3	1.3	1
Yamaha	4	—	14	1	10	8	—	37	16.6	24
Other and unknown	—	1	—	—	—	—	—	1	0.4	1
<b>Total</b>	<b>11</b>	<b>42</b>	<b>46</b>	<b>3</b>	<b>29</b>	<b>92</b>	<b>—</b>	<b>223</b>	<b>100.0</b>	<b>152</b>



**TABLE 10 — MOTOR VEHICLES (a) ON REGISTER, WESTERN AUSTRALIA  
('000)**

At 30 June	Passenger vehicles	Light commercial vehicles	Rigid trucks	Articulated trucks	Non - freight carrying trucks (b)	Buses	Motor cycles	Total	Perth Statistical Division
1989	708.3	140.9	78.6	5.3	9.0	7.9	36.3	986.2	719.1
1990	746.2	146.7	83.8	5.7	9.3	8.6	37.5	1,037.7	759.7
1991	764.2	149.1	86.2	5.6	9.3	9.0	38.2	1,061.6	774.9
1992	781.6	150.1	87.9	5.6	9.3	9.5	37.8	1,081.7	791.2
1993	803.7	153.3	91.1	5.8	9.3	9.8	37.9	1,111.0	812.1
1994	827.8	156.9	95.2	6.1	9.3	9.9	37.1	1,142.4	835.9

(a) Excludes plant and equipment, caravans and trailers. (b) Includes ambulances, hearses, fire engines and fire tenders, tow trucks, mobile cranes, machine mounted non-freight carrying trucks and motorised caravans.

## EXPLANATORY NOTES

### Introduction

This publication contains detailed information regarding registrations of new motor vehicles, motor cycles, plant and equipment, caravans and trailers. Details of the number of motor vehicles on register are also included.

2. The statistics in this publication are based, from July 1991 onwards, on new processing procedures using the new Vehicle Identification Number (VIN) introduced by motor vehicle registration authorities from July 1990. The VIN system allows more accurate identification and classification of newly registered vehicles. As a result, data processed on this system are not strictly comparable with those processed on the old system.

3. Both the old and new series have been compiled for the period between December 1990 and July 1991. Detailed statistics on both bases are available on request.

### Scope and coverage

4. Vehicle licensing in Western Australia is the responsibility of the Police Department and a number of local government authorities performing licensing functions or acting as collection agents on behalf of the Department.

5. The statistics in this bulletin have been prepared from data made available by licensing authorities and reflect information as recorded in registration documents. Delays in the receipt of some registrations data have meant that new motor vehicle registration statistics for a particular month include vehicles registered prior to that month.

6. Registrations of new motor vehicles relate to factory-new vehicles registered for the first time.

7. The statistics include vehicles with diplomatic and consular plates and State and Commonwealth Government owned vehicles other than those belonging to the defence services.

8. The statistics exclude any vehicles which will not be used on public roads such as tractors (particularly the agricultural type), plant and equipment and motor vehicles used solely on farms, in mines or in National Parks, etc. as well as recreational vehicles such as trail bikes or sand dune buggies.

### Vehicle Identification Number (VIN)

9. The Vehicle Identification Number (VIN) uniquely identifies each vehicle. Embedded within this number are details of make and model together with other relevant information concerning the vehicle. The VIN is now collected by the Police Department at the time each new vehicle is registered. The VIN is passed on to the Australian Bureau of Statistics (ABS) as part of the New Motor Vehicles Registrations record.

### Vehicle classification

10. The decoding of the VIN has resulted in better identification of each vehicle's body type and consequently classification of vehicles to particular categories.

11. Small passenger carrying vans such as microbuses are now consistently classified as passenger vehicles. Under the old system, these could have been classified as cars, station wagons or buses. Cab-chassis vehicles, which were previously classified to small trucks, are now consistently classified to light commercial vehicles. In addition, tractors are no longer classified separately. They are now included in the plant and equipment category.

### Vehicle type definitions

12. *Passenger Vehicles.* Vehicles constructed primarily for the carriage of less than 10 passengers (including the driver). Included are cars, station wagons, 4WD passenger vehicles and forward control passenger vehicles.

13. *Light Commercial Vehicles.* Vehicles constructed primarily for the carriage of goods and do not exceed 3.5 tonnes gross vehicle mass (GVM). Included are utilities, panel vans, cab-chassis and forward control vehicles (whether 4WD or not).

14. *Rigid Trucks.* Vehicles constructed primarily for load carrying with a gross vehicle mass (GVM) exceeding 3.5 tonnes. Included are normal rigid trucks with a tow bar, draw bar or other non-articulated coupling on the rear for use with a trailer or dolly.

15. *Articulated Trucks.* Vehicles constructed primarily for load carrying consisting of a prime mover having no significant load carrying area but with a turn table device which can be linked to a trailer. With or without a trailer the gross combination mass (GCM) will exceed 3.5 tonnes.

16. *Non-freight Carrying Trucks.* Includes specialist vehicles such as ambulances or mobile cranes or vehicles fitted with special purpose equipment and having no goods carrying capacity.

17. *Buses.* Includes all passenger vehicles having more than nine seats, including the driver.

### Seasonal adjustment and trend estimation

18. Original, seasonally adjusted and trend estimate series for registrations of new motor vehicles are shown in Table 2. The two component series 'Passenger vehicles' and 'Other vehicles' are each adjusted separately and then summed to derive total seasonally adjusted and trend registrations. In the seasonally adjusted series, account has been taken of normal seasonal factors and 'trading day' effects (arising from the varying numbers of Sundays, Mondays, Tuesdays, etc. in the month) and the effect of movement in the date of Easter which may, in successive years, affect figures for different months.

19. Seasonally adjusted statistics should not be regarded as in any way definitive. In interpreting particular seasonally adjusted statistics it is important to bear in mind the methods by which they have been derived and the limitations to which the methods used are subject.

20. Seasonal adjustment is a means of removing the estimated effects of normal seasonal variation from the series so that the effects of other influences on the series may be more clearly recognised. Seasonal adjustment

procedures do not aim to remove the irregular or non-seasonal influences which may be present in any particular months, such as the effect of introducing new models or of industrial disputes. Irregular influences that are highly volatile can make it difficult to interpret the movement of the series even after adjustment for seasonal variation.

21. The seasonally adjusted series can, however, be smoothed to reduce the impact of the irregular component in the adjusted series. This smoothed seasonally adjusted series is called a trend estimate. The trend estimates of motor vehicle registration statistics are shown in Table 2 and have been derived by applying a 13-term Henderson-weighted moving average to the seasonally adjusted series.

22. While the technique enables trend estimates for the latest period to be produced, it does result in revisions to the trend estimate for the most recent months as additional observations become available. There may also be revisions as a result of changes in the original data, and as a result of the re-estimation of the seasonal factors.

23. Users may wish to refer to the ABS Information Papers, *A Guide to Interpreting Time Series - Monitoring 'Trends' - An Overview* (1348.0), *A Guide to Smoothing Time Series - Estimates of 'Trend'* (1316.0) and *Time Series Decomposition - An Overview* (1317.0) for more detailed information on smoothing of seasonally adjusted time series data.

#### Vehicles on register

24. The number of vehicles on register at a given date are those for which fees were paid up for a period which includes the reference date.

#### Unpublished data and related publications

25. The ABS may also make available on request certain unpublished motor vehicle registrations data. This data includes make and small area breakdowns of vehicles on register figures. A charge may be made for providing unpublished information.

26. Other ABS publications which may be of interest include:

<b>AUSTRALIA</b>	<b>Catalogue No</b>
Registrations of New Motor Vehicles (Preliminary) (Monthly)	9301.0
Motor Vehicle Registrations (monthly)	9303.0
Motor Vehicle Registrations (annual)	9304.0
Motor Vehicle Census (triennial)	9309.0

27. Current publications produced by the ABS are listed in the *Catalogue of Publications and Products* (1101.0). The ABS also issues, on Tuesdays and Fridays, a *Publications Advice* (1105.0) which lists publications to be released in the next few days. The *Catalogue* and *Publications Advice* are available from any ABS Office.

#### Symbols and other usages

—	nil or rounded to zero
r	figure or series revised since last issue
n.a.	not available
— — —	break in continuity of series

28. Where figures have been rounded, discrepancies may occur between sums of the component items and totals.

#### Electronic services

##### DISCOVERY

The ABS intends discontinuing its statistical information service on DISCOVERY. Please contact Peter Davidson (Phone 06 252 6684) to discuss possible alternatives for acquiring statistics or if you wish to comment on this proposal.

##### PC-AUSSTATS

Thousands of up-to-date time series are available on this ABS on-line service. For further information phone the PC-Ausstats Help Desk on (06) 252 6017.

##### DIAL-A-STATISTIC

Phone 0055 86400 from anywhere, any time for the latest available data on the Consumer Price Index, National Accounts, Balance of Payments, Labour Force, Average Weekly Earnings, and Estimated Resident Population.

**P. C. KELLY**  
Deputy Commonwealth Statistician  
and Government Statistician

